

NETWORK OF CARE: STATE OF NEBRASKA

Connecting Consumers to Support Services for Recovery and Mental Wellness

Overview: Network of Care is a state-of-the-art website providing Nebraska consumers information on support services for mental health and wellness in the 93 counties of Nebraska and six mental health regions. These support services range from mental health care, addictions and recovery, writing a WRAP, family support services, housing, affordable healthcare, and many more services. There are dozens of languages Network of Care is translated into, and a website video that presents the information in sign language.

Handouts will include:

- Corporate handout on Network of Care
- Business card of Network of Care state-wide Behavioral Health Outreach Advocate
- Copy of Power Point Presentation on Network of Care
- CASA Presentation on Developmental Disabilities
- CASA Presentation on Mental Illness: pediatric chronic and severe
- CASA Presentation Aug 2017 overview sheet

Learning objectives:

Attendees will learn: what Network of Care is and what Network of Care provides. Attendees will learn basic information regarding utilizing Network of Care Website, how to locate support services relative to mental illness in 93 counties in Nebraska. Attendees will meet Nebraska's Behavioral Health Outreach Advocate.

- what is Network of Care
- a brief history on Network of Care in the United States
- a brief history on Network of Care in Nebraska
- how to navigate Network of Care website
- discussion on how to locate necessary services in each region in Nebraska
- FAQs and question and answer session

Services and Information in Nebraska for Children who have Chronic and Severe Mental Illness

- what chronic and severe mental illness in children
- a brief history on chronic and severe mental illness in children in the United States
- a brief history on chronic and severe mental illness in children in Nebraska
- links to services that may be helpful
- discussion on how to locate mental health and recovery services in each region in Nebraska
- question and answer session

Services and Information in Nebraska for Children who have Developmental Delays, Including Autism

- what is a Developmental Delay
- what is Autism
- a brief history on Developmental Delays in the United States
- a brief history on Autism in Nebraska
- links that may be helpful
- discussion on how to locate services for Developmental Delays and Autism in each region in Nebraska
- question and answer session

http://dhhs.ne.gov/developmental_disabilities/Pages/aDDP.aspx

NETWORK of CARE NEBRASKA

For Behavioral Health

www.networkofcare.org

What You Will Learn Today

- What is Network of Care
- A brief history on Network of Care in the United States
- A brief history on Network of Care in Nebraska
- How to navigate Network of Care website
- Discussion on how to locate mental health and recovery services in each region in Nebraska
- FAQs and question and answer session
- Next we will explore Network of Care for Nebraska options available in random counties from each Behavioral Health region
- If you have your Ipad, Tablet or Laptop with you today, now is the time to turn it on and practice navigating the NOC website
- I will demonstrate navigation and portal access on the screen in front of you
- Please feel free to ask questions at any time

Information is Powerful

Whether it's a family member in crisis, the search for a physician, or the need for a veteran to find a job, getting the right information at the right time can make a huge impact in quality of life. At Trilogy Integrated Resources, we are dedicated to improving information and communication in the health and social service fields at the community level.

We work with federal, state and local government and nonprofit, social-service agencies to help them use the Internet and Web-based tools that can connect people with the information and services they need to lead better, more productive lives. In more than a decade, we've built an enviable track record: Our Network of Care Web sites provide a central clearinghouse for critical information and are used in states and counties throughout the U.S.

This creative combination of public policy needs, personal human service, and technology is at the core of everything we do.

A Little Bit of History

- The Network of Care was a concept inspired by the widespread fragmentation of social services of all kinds. That fragmentation still exists today - and the Network of Care is still here to help.
- Trilogy Integrated Resources is a team of public policy advocates and information technologists based in San Rafael, Calif. We are dedicated to improving the way people can get access to the health care information they need.
- It's amazing what we can accomplish together when commitment meets expertise.

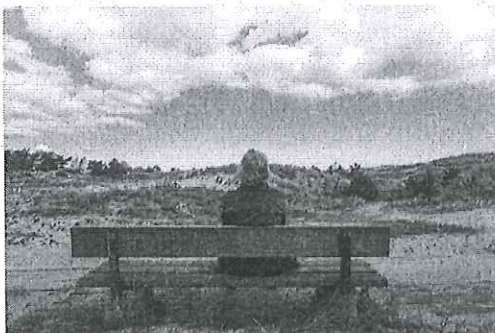
What is Network of Care?

- **SERVICE DIRECTORY**

- Provide a comprehensive database that enables consumers to quickly locate local programs and services and make informed choices about what they need.



Resources at Your Fingertips



- **CRISIS SERVICES**

- Offer quick reference to all local emergency and crisis intervention programs in your area.

Info 2 Go



- **LIBRARY**
- Assembles more than 30,000 high-quality articles, fact sheets and interactive tools in English - and more than 10,000 in Spanish.

Learning Your Way: Any Time, Any Where

- **eLEARNING**
- Free online training for consumers and a comprehensive online solution for professional CEUs.



The Network of Care for Behavioral Health is provided in partnership with the National Association of County Behavioral Health & Developmental Disability Directors

- The Network of Care was specifically recommended to all states and counties by the President's New Freedom Commission on Mental Health. This unique and successful program has served tens of millions of consumers during the past decade. It can be easily replicated and customized for any county and state in the nation.
- During the past decade, the Network of Care suite of products has served more than 30 million persons across the nation and trained hundreds of thousands - in person and online - via our Learning Management System. The Call Center application has served hundreds of thousands of consumers.

More NOC Key Features

- The Learning Center is designed to educate, inform, and provide access to the most relevant information available for a particular subject area
- Each portal is fully customized to serve the local area, and a user-friendly client interface enables Network of Care partners to easily display local content throughout the site

More NOC Key Features

- An advanced Social Networking platform is designated to promote collaboration and coordination across diverse groups in each community.
- Both HIPAA and HL7 compliant, the Personal Health Record stores valuable medical and legal information and documents. It integrates seamlessly with the Network of Care.
- A call center application that records and tracks information about a client's specific and unmet needs. Customize fields for data collection, make direct referrals to providers, and produce the reports you need.

To Sum Up Network of Care

The site that Trilogi provides to counties for behavioral-health services is revolutionary, putting power and control in the hands of consumers and providers to address their own behavioral-health issues of themselves, their family members and their clients in a way heretofore unknown. This product reduces barriers, increases knowledge, and provides information instantaneously to the providers and recipients of care.

CAROLYN MAUE
Executive Director
American College of Mental Health Administration

Get in Touch

To schedule a presentation on Network of Care to consumers in your Behavioral Health Care Region or Organization, please contact:

Roxann Hamilton M. Ed, CPSWS, CSIS, CWRAPF, COLTC, CASA

Behavioral Health Outreach Advocate

402-840-1861

roxannhamilton@yahoo.com

Network of Care Contacts

- Trilogy Integrated Resources is a California-based Internet company that focuses on providing access to high-quality information and community-based programs in the health and human services arena.
Phone: 415.458.5900 | Email: info@trilogyir.com
- Bruce Bronzan, President, Trilogy Resources Bronzan@trilogyir.com (415) 458-5900
- Kathy Sterbenc, Vice President, Trilogy Resources Sterbenc@trilogyir.com or (415) 458-5900

STATE OF NEBRASKA

ROSTER

MENTAL HEALTH CENTERS

NEBRASKA

Good Life. Great Mission.

DEPT. OF HEALTH AND HUMAN SERVICES

Department of Health and Human Services
Division of Public Health, Licensure Unit

Nebraska State Office Building
301 Centennial Mall South, Third Floor
PO Box 94986
Lincoln, NE 68509-4986

Mental Health Center licenses expire February 28th each year

NEBRASKA MENTAL HEALTH CENTERS

	Total Licensed Facilities	Total Licensed Beds
Mental Health Center	26	602

LEGEND

MHC means a Mental Health Center

TJC means The Joint Commission

CARF means Commission on Accreditation of Rehabilitation Facilities

COA means Counsel on Accreditation

Updated: 8/15/2017

TOWN (County) Zip Code			
Name of Facility	Fac Type		
Address	License No		
Phone Number	Accreditation/ Certification	No. and Type of Beds	Services
BELLEVUE (SARPY) - 68005	MHC	Total Beds - 16	IN-PATIENT
Recovery Center At Sarpy	MHC063		
2231 LINCOLN ROAD	CARF		
(402) 291-1203 FAX: (402) 291-3906			
TELECARE MENTAL HEALTH SERVICES OF NEBRASKA			
KELLY DORFMEYER, ADMINISTRATOR			
c/o: KELLY DORFMEYER, PROGRAM ADMINISTRATOR TELECARE CORPORATION / RECOVERY CENTER AT SARPY, 2231 LINCOLN ROAD, BELLEVUE NE 68005			
BLUE HILL (WEBSTER) - 68930	MHC	Total Beds - 42	IN-PATIENT
Life Quest At Belle Amis, INC	MHC086		
401 WEST GAGE STREET	NONE		
(402) 756-4750 FAX: (402) 756-4752			
LIFE QUEST, INC.			
LAURA DOWNING, ADMINISTRATOR			
c/o: LAURA DOWNING, ADMINISTRATOR LIFE QUEST AT BELLE AMIS, PO BOX 126, BLUE HILL NE 68930			
BOYS TOWN (DOUGLAS) - 68010	MHC	Total Beds - 80	ADOLESCENT IN-PATIENT
Boys Town Residential Treatment Center-West	MHC096		
14092 BOYS TOWN HOSPITAL RD	TJC		
(402) 498-6392 FAX: (402) 452-5012			
FATHER FLANAGAN'S BOYS' HOME			
PATRICK CONNELL, ADMINISTRATOR			
c/o: PAT CONNELL, VICE PRESIDENT BOYS TOWN TREATMENT CENTER, 14092 HOSPITAL RD., BOYS TOWN NE 68010			
GRAND ISLAND (HALL) - 68803	MHC	Total Beds - 6	IN-PATIENT
Mid-Plains Center For Behavioral Healthcare Services	MHC066		
914 BAUMANN DRIVE			
(308) 395-1044 FAX: (308) 395-1060			
MID-PLAINS CENTER FOR BEHAVIORAL HEALTHCARE			
CORRIE EDWARDS, ADMINISTRATOR			
c/o: CORRIE EDWARDS, ADMINISTRATOR MID-PLAINS CTR FOR BEHAVIORAL HEALTHCARE SERVICES, PO BOX 1763, GRAND ISLAND NE 68802			
HASTINGS (ADAMS) - 68901	MHC	Total Beds - 9	IN-PATIENT
Able House	MHC055		
1136 NORTH WASHINGTON	CARF		
(308) 237-5951 FAX: (308) 234-4018			
SOUTH CENTRAL BEHAVIORAL SERVICES, INC			
SUSAN HENRIE, ADMINISTRATOR			
c/o: SUSAN HENRIE, ADMINISTRATOR SOUTH CENTRAL BEHAVIORAL SERVICES, PO BOX 1715, KEARNEY NE 68848			
LINCOLN (LANCASTER) - 68502	MHC	Total Beds - 10	GENDER LIMITED IN-PATIENT
CenterPointe Veterans Transitional Housing	MHC094		
630 C STREET	CARF		
(402) 475-8717 FAX: (402) 475-8721			
CENTERPOINTE, INC.			
JOHNNY RODRIGUEZ			
c/o: TOPHER HANSEN, ADMINISTRATOR CENTERPOINTE, INC, 2633 P STREET, LINCOLN NE 68503			

TOWN (County) Zip Code				
Name of Facility				
Address	Fac Type			
Phone Number	License No			
Licensee	Accreditation/	No. and Type of		
Administration	Certification	Beds		Services
LINCOLN (LANCASTER) - 68502	MHC	Total Beds - 12		ADOLESCENT
Child Guidance Center Residential Treatment Center	MHC045			GENDER LIMITED
904 SUMNER STREET	TJC			IN-PATIENT
(402) 434-2670 FAX: (402) 434-2672				
CHILD GUIDANCE CENTER				
PATRICK SAILORS, ADMINISTRATOR				
c/o: PATRICK SAILORS, DIRECTOR CHILD GUIDANCE CENTER RESIDENTIAL TREATMENT CENTER, 904 SUMNER STREET, LINCOLN NE 68502				
LINCOLN (LANCASTER) - 68503	MHC	Total Beds - 15		IN-PATIENT
Community Transitions	MHC104			
2039 Q STREET				
(402) 904-4081 FAX: (402) 475-8721				
CENTERPOINTE, INC.				
NIKKI LIGHTNER				
c/o: TOPHER HANSEN, ADMINISTRATOR CENTERPOINTE, INC., 2633 P STREET, LINCOLN NE 68503				
LINCOLN (LANCASTER) - 68509	MHC	Total Beds - 85		IN-PATIENT
Lincoln Regional Center	MHC008			
FOLSOM & PROSPECTOR, BUILDING 14	TJC			
(402) 479-5388 FAX: (402) 479-5591				
STATE OF NEBRASKA, DEPT OF HEALTH & HUMAN SERVS				
MYLES JONES				
c/o: MYLES JONES, ADMINISTRATOR LINCOLN REGIONAL CENTER, PO BOX 94949, LINCOLN NE 68509				
LINCOLN (LANCASTER) - 68507	MHC	Total Beds - 24		ADOLESCENT
LRC Whitehall Psychiatric Residential Treatment Facility	MHC005			GENDER LIMITED
5845 HUNTINGTON AVENUE 5800 LEIGHTON, 5819 HUNTINGTON, 5801 WALKER	TJC			IN-PATIENT
(402) 479-5388 FAX: (402) 479-5591				
STATE OF NEBRASKA, DEPT OF HEALTH & HUMAN SERVS				
MYLES JONES				
c/o: MYLES JONES, ADMINISTRATOR LRC WHITEHALL PRTF, PO BOX 94949, LINCOLN NE 68509				
LINCOLN (LANCASTER) - 68508	MHC	Total Beds - 16		IN-PATIENT
Mental Health Crisis Center Of Lancaster County	MHC108			
825 J STREET				
(402) 441-8276 FAX: (402) 441-8624				
LANCASTER COUNTY				
SCOTT ETHERTON, ADMINISTRATOR				
c/o: SCOTT ETHERTON, ADMINISTRATOR MENTAL HEALTH CRISIS CENTER OF LANCASTER COUNTY, LINCOLN NE 68508				
NORFOLK (MADISON) - 68701	MHC	Total Beds - 10		GENDER LIMITED
The Link Inc- Dual Recovery Program	MHC110			IN-PATIENT
305 NORTH 9TH STREET				
(402) 371-5310 FAX: (402) 371-7483				
THE LINK, INC.				
TOM BARR				
c/o: TOM BARR, EXECUTIVE DIRECTOR THE LINK, INC, 1001 W NORFOLK , NORFOLK NE 68701				

TOWN (County) Zip Code

Name of Facility

Address

Phone Number

Licensee

Administration

Fac Type

License No

Accreditation/
CertificationNo. and Type of
Beds

Services

NORFOLK (MADISON) - 68701

Women's Empowering Life Line, Inc.

910 WEST PARK AVE

(402) 371-0220 FAX: (402) 644-4593

THE WOMEN'S EMPOWERING LIFE LINE, INC.

DANIELLE LARSON

c/o: DANIELLE LARSON, ADMINISTRATOR WOMEN'S EMPOWERING LIFE LINE, INC., P.O. BOX 1392, NORFOLK NE 68702

MHC

MHC101

CARF

Total Beds - 15

GENDER LIMITED
IN-PATIENT

OMAHA (DOUGLAS) - 68122

Chi Health Psychiatric Residential Treatment Facility

6845 N 68TH PLAZA

(402) 572-2040 FAX: (402) 572-3177

ALEGENT HEALTH IMMANUEL MEDICAL CENTER

CHRISTY AL-NEMAH, ADMINISTRATOR

c/o: CHRISTY AL-NEMAH, ADMINISTRATOR CHI HEALTH PSYCHIATRIC RESIDENTIAL TREATMENT FAC, 6845 N. 68TH PLAZA, OMAHA NE 68122

MHC

MHC090

TJC

Total Beds - 20

ADOLESCENT
IN-PATIENT

OMAHA (DOUGLAS) - 68106

Community Alliance - Alliance House

2130 SOUTH 46TH STREET

(402) 341-5128 FAX: (402) 505-9849

COMMUNITY ALLIANCE REHABILITATION
SERVICES

CAROLE BOYE, ADMINISTRATOR

c/o: CAROLE BOYE, ADMINISTRATOR COMMUNITY ALLIANCE REHABILITATION SERVICES, 4001 LEAVENWORTH ST., OMAHA NE 68105

MHC

MHC024

CARF

Total Beds - 8

IN-PATIENT

OMAHA (DOUGLAS) - 68106

Community Alliance - Arbor House

2504 SOUTH 60TH STREET

(402) 341-5128 FAX: (402) 505-9849

COMMUNITY ALLIANCE REHABILITATION
SERVICES

CAROLE BOYE, ADMINISTRATOR

c/o: CAROLE BOYE, ADMINISTRATOR COMMUNITY ALLIANCE REHABILITATION SERVICES, 4001 LEAVENWORTH STREET, OMAHA NE 68105

MHC

MHC022

CARF

Total Beds - 8

IN-PATIENT

OMAHA (DOUGLAS) - 68134

Community Alliance - Ashwood House

2313 NORTH 72ND STREET

(402) 341-5128 FAX: (402) 505-9849

COMMUNITY ALLIANCE REHABILITATION
SERVICES

CAROLE BOYE, ADMINISTRATOR

c/o: CAROLE BOYE, ADMINISTRATOR COMMUNITY ALLIANCE REHABILITATION SERVICES, 4001 LEAVENWORTH STREET, OMAHA NE 68105

MHC

MHC056

CARF

Total Beds - 9

IN-PATIENT

TOWN (County) Zip Code

Name of Facility

Address

Phone Number

Licensee

Administration

Fac Type

License No

Accreditation/
CertificationNo. and Type of
Beds

Services

OMAHA (DOUGLAS) - 68134

Community Alliance - Cole Creek House

7233 PINKNEY STREET

(402) 341-5128 FAX: (402) 505-9849

COMMUNITY ALLIANCE REHABILITATION
SERVICES

CAROLE BOYE, ADMINISTRATOR

c/o: CAROLE BOYE, ADMINISTRATOR COMMUNITY ALLIANCE REHABILITATION SERVICES, 4001 LEAVENWORTH STREET,
OMAHA NE 68105

MHC

MHC014

CARF

Total Beds - 8

IN-PATIENT

OMAHA (DOUGLAS) - 68104

Community Alliance - Morningstar

6025 OGDEN STREET

(402) 341-5128 FAX: (402) 505-9849

COMMUNITY ALLIANCE REHABILITATION
SERVICES

CAROLE BOYE, ADMINISTRATOR

c/o: CAROLE J. BOYE, ADMINISTRATOR COMMUNITY ALLIANCE INC, 4001 LEAVENWORTH STREET, OMAHA NE 68105

MHC

MHC034

CARF

Total Beds - 40

IN-PATIENT

OMAHA (DOUGLAS) - 68117

Community Alliance - Orchard House

4901 SOUTH 52ND STREET

(402) 341-5128 FAX: (402) 505-9849

COMMUNITY ALLIANCE REHABILITATION
SERVICES

CAROLE BOYE, ADMINISTRATOR

c/o: CAROLE BOYE, ADMINISTRATOR COMMUNITY ALLIANCE REHABILITATION SERVICES, 4001 LEAVENWORTH STREET,
OMAHA NE 68105

MHC

MHC015

CARF

Total Beds - 8

IN-PATIENT

OMAHA (DOUGLAS) - 68108

Community Alliance - Vinton House

2052-2054 DEER PARK BLVD

(402) 341-5128 FAX: (402) 505-9849

COMMUNITY ALLIANCE REHABILITATION
SERVICES

CAROLE BOYE, ADMINISTRATOR

c/o: CAROL BOYE, ADMINISTRATOR COMMUNITY ALLIANCE REHABILITATION SERVICES, 4001 LEAVENWORTH STREET,
OMAHA NE 68105

MHC

MHC023

CARF

Total Beds - 12

IN-PATIENT

OMAHA (DOUGLAS) - 68104

Mental Health Respite - Fontenelle

3321 FONTENELLE BLVD

(402) 598-6296 FAX: (402) 505-8243

THE SALVATION ARMY

SHAWN INGALLS

c/o: SHAWN INGALLS, ADMINISTRATOR MENTAL HEALTH RESPITE - FONTENELLE , 3612 CUMING STREET, OMAHA NE 68131

MHC

MHC109

NONE

Total Beds - 16

IN-PATIENT

TOWN (County) Zip Code				
Name of Facility				
Address	Fac Type			
Phone Number	License No			
Licensee	Accreditation/	No. and Type of		
Administration	Certification	Beds	Services	
OMAHA (DOUGLAS) - 68131	MHC	Total Beds - 16	IN-PATIENT	
MENTAL HEALTH RESPITE CUMING STREET	MHC107			
3612 CUMING ST, 4TH FLOOR				
(402) 480-3197 FAX: (402) 505-8258				
THE SALVATION ARMY				
DARSEY ZWIENER				
c/o: DARSEY ZWIENER, ADMINISTRATOR 3612 CUMING ST, OMAHA NE 68131				
OMAHA (DOUGLAS) - 68152	MHC	Total Beds - 51	ADOLESCENT	
Nova Treatment Community, Inc	MHC095		IN-PATIENT	
8502 MORMON BRIDGE ROAD	CARF			
(402) 455-8303 FAX: (402) 455-7050				
NOVA TREATMENT COMMUNITY, INC				
PEGG SIEMEK-ASCHE				
c/o: PEGG SIEMEK-ASCHE, CHIEF EXECUTIVE OFFICER NOVA TREATMENT COMMUNITY, 8502 MORMON BRIDGE ROAD, OMAHA NE 68152				
PALMER (MERRICK) - 68864	MHC	Total Beds - 55	IN-PATIENT	
Life Quest At The Coolidge Center	MHC043			
201 COMMERCIAL STREET	NONE			
(308) 894-3047 FAX: (308) 894-3057				
LIFE QUEST, INC.				
NANCY STEPHENS, ADMINISTRATOR				
c/o: NANCY STEPHENS, ADMINISTRATOR LIFE QUEST AT THE COOLIDGE CENTER, PO BOX 217, PALMER NE 68864				
SEWARD (SEWARD) - 68434	MHC	Total Beds - 11	ADOLESCENT	
OMNI Behavioral Health - Seward Family Support Center	MHC048		IN-PATIENT	
503 NORTH 5TH STREET	NONE			
(402) 643-2320 FAX: (402) 643-3069				
OMNI BEHAVIORAL HEALTH				
SHANNON SIECK, ADMINISTRATOR				
c/o: KRIS TEVIS, DIRECTOR OF COMPLIANCE OMNI BEHAVIORAL HEALTH, 5115 'F' STREET, OMAHA NE 68117				
Total Facilities: 26				

NEBRASKA DEPARTMENT OF HEALTH & HUMAN SERVICES

Helping People Live Better Lives

BEHAVIORAL HEALTH | CHILDREN & FAMILY SERVICES | DEVELOPMENTAL DISABILITIES | MEDICAID & LONG-TERM CARE

Search this

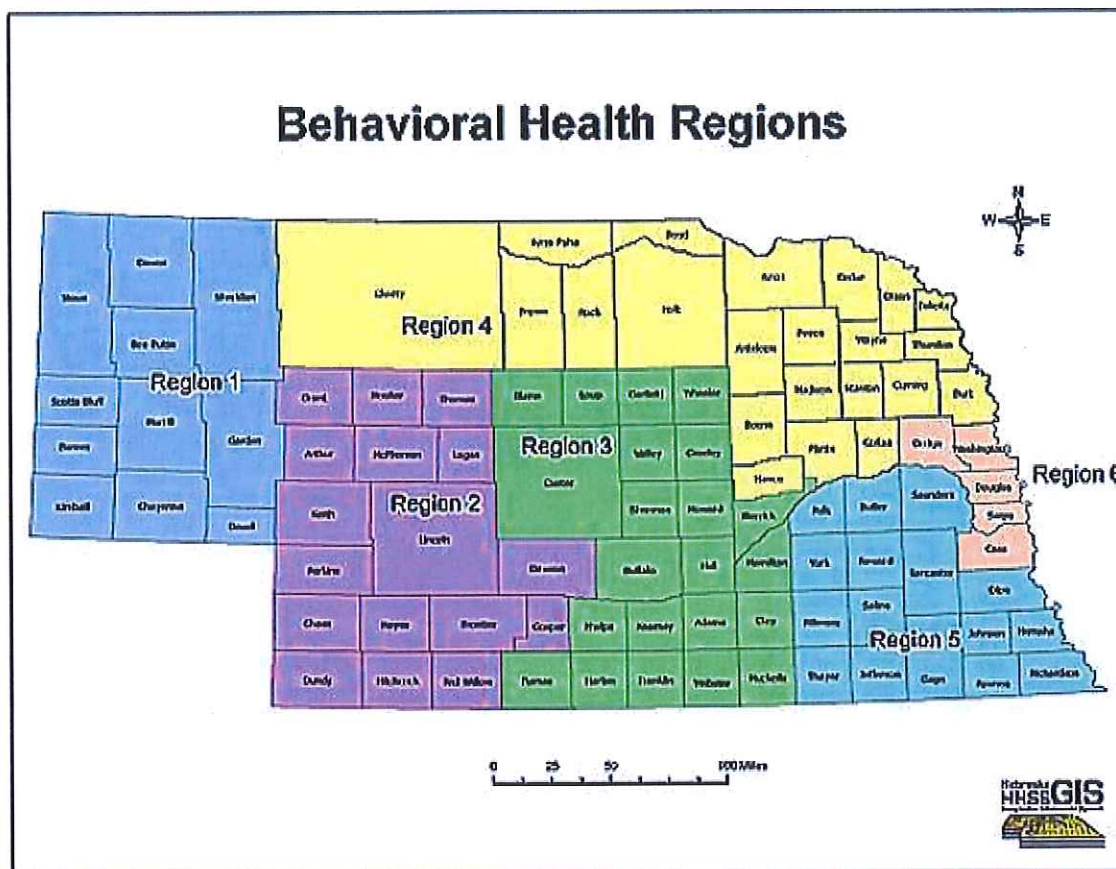
Regional Behavioral Health Authorities

Nebraska is split into six "regions." These are local units of governments that the state partners with to do planning and service implementation.

Each county taking part in a region appoints one county commissioner to sit on a regional board. They will represent that county and participate in the decision making of the board. The region is staffed by an administrator who in turn hires additional personnel.

The map below shows Nebraska Behavioral Health Regions. The Table that follows provides a list of Administrators.

The regions purchase services from providers in their area. If necessary, services are purchased from other service providers across the state.



See Searchable Map

Region	Administrator and Address	Contact Information
Region 1	Barbara Vogel, Acting Reg. Admin. Region 1 Regional Administrator 18 West 16th Street Scottsbluff, NE 69361	Phone: (308) 633-2079 FAX: (308) 633-2326 Website: http://region1bhs.net/ Email: bvogel@region1bhs.net
Region 2	Kathy Seacrest Region 2 Regional Administrator 110 North Bailey Street P.O. Box 1208 North Platte, NE 69103	Phone: (308) 534-0440 FAX: (308) 534-6961 Website: www.r2hs.com/ Email: kathy@r2hs.com
Region 3	Beth Baxter, M.S. Region 3 Regional Administrator 4009 6th Avenue, Suite 65 P.O. Box 2555 Kearney, NE 68848	Phone: (308) 237-5113 FAX: (308) 236-7669 Website: www.Region3.net Email: bbaxter@region3.net
Region 4	Ingrid Gansebom Region 4 Regional Administrator 206 Monroe Avenue Norfolk, NE 68701	Phone: (402) 370-3100 x 120 FAX: (402) 370-3125 Website: www.region4bhs.org/ Email: igansebom@region4bhs.org
Region 5	C.J. Johnson Region 5 Regional Administrator 1645 "N" Street Suite A Lincoln, NE 68508	Phone: (402) 441-4343 FAX: (402) 441-4335 Web: www.region5systems.net Email: cji@region5systems.net
Region 6	Patti Jurjevich Region 6 Regional Administrator 3801 Harney Street Omaha, NE 68131-3811	Phone: (402) 444-6573 FAX: (402) 444-7722 WEB: www.Regionsix.com Email: pjurjevich@regionsix.com

NEBRASKA DEPARTMENT OF HEALTH & HUMAN SERVICES

Helping People Live Better Lives

BEHAVIORAL HEALTH

CHILDREN & FAMILY SERVICES

DEVELOPMENTAL DISABILITIES

MEDICAID & LONG-TERM CARE

Search this

DD Division of Developmental Disabilities



Participants



Providers



Resources



Training



Our Future



Regs/Waivers

[Prospective Provider](#)

[Independent Provider](#)

[Agency Provider](#)

[Provider Bulletins](#)

Provider Main Page

[Subscribe to Bulletins](#) to be notified of updates!

Welcome to the provider page for the Division of Developmental Disabilities (DD). We are here to help you, our providers!

Please check out the page links on the left to meet your specific needs, whether you are interested in becoming a provider or are currently serving DD participants as an independent or agency provider.

Guidance Documents

[DD Provider Handbook](#) - An overview for DD providers, including their role in serving participants, what is expected, and how to bill for services. [En Español aquí.](#)

[DD Provider Resources](#) - Brochure outlining resources. Resources include this website, organizations that compile provider lists, and training opportunities.


[DD Service Directory](#) - Full service descriptions including definitions, limits, frequency, duration, provider types, and provider qualifications for DD services under the submitted HCBS Waivers. [En Español aquí.](#)

NEW!

[FAQs: Medicaid HCBS Waiver for DD Transition](#) - Answers your questions about transportation, leave days, exception funding, billing/rates, residential habilitation, transition priorities, in-home residential, old companion home service, FBAs, ICAPs, and different waivers. - UPDATED 7/31/17



NEW!

[FAQs: Developmental Disabilities and Vocational Rehabilitation](#) - Answers your questions about the services provided by DD and VR.




 [Functional Behavioral Assessments & Behavior Support Plans](#) - Flow chart on the process to help participants with target behaviors.

 [Functional Behavioral Assessment Template](#) - Expectations that may be shared with a clinician completing a FBA for a participant. This meets the requirements as listed on the Behavioral Health Service Definitions for Heritage Health.

[Incident Reporting: Completing General Event Reports \(GERs\) in Therap](#) - Link to 2017 instructions approved by the Division of Developmental Disabilities and available on Therap.

  [Nebraska Lifespan Respite Network](#) - This brochure describes Nebraska's respite provider infrastructure, basic information about responsibilities, family caregiver support, and instructions for accessing the online (or paper) orientation.

Services Quick Guide for Nebraska Medicaid Home and Community-Based Services (HCBS) DD Waivers - Brief overview of DD services under the submitted HCBS Waivers.

 [online view](#)  [printable](#) (please print two-sided)  [en Español](#)

DD Rate Reform

The Division is working to assess and improve Nebraska's current Medicaid Waiver rate structure to ensure appropriate reimbursement. Information can be found on our [rate reform page](#). This page will continue to be updated as the process continues and we want to ensure that you, our stakeholders, have the most recent information.


Regulation Drafts for Public Comment

The Division is in the process of writing new regulations. We are not yet in an "official" public comment period, but are providing working drafts for stakeholder review on a [public comment page](#). The working draft will continue to change as input is received. We want to ensure that you, our stakeholders, have maximum opportunity to review and make suggestions.

Provider Bulletins

Information for all providers of DD services. Stay informed on new and recent developments.

Contact Us

Documents in  PDF format require the use of Adobe Acrobat Reader which can be downloaded for free from [Adobe Systems, Inc.](#)

NEBRASKA DEPARTMENT OF HEALTH & HUMAN SERVICES**NEBRASKA**

Good Life. Great Mission.

*Helping People Live Better Lives***BEHAVIORAL HEALTH****CHILDREN & FAMILY SERVICES****DEVELOPMENTAL DISABILITIES****MEDICAID & LONG-TERM CARE****PUBLIC HEALTH**

Search this site...

**Office of Consumer Affairs** [Subscribe to this page](#)**Inside the Office:**[Consumer Involvement](#)[OCA Peoples Council](#)[Peer Support Training/Certification](#)[Finding the Silver Lining:
Trauma and Peer Support](#)**Reports**

We invite you to [provide us with feedback](#) on the following reports.

[2016 Nebraska Peer Support Workforce Report](#) [Nebraska Peer Support Certification Study](#) [Nebraska Peer Support Focus Group-Survey Report Final](#) [Transformation Transfer Initiative 2-4-14](#)**Special Items of Interest** [Peer Support and Wellness Specialist Skills Training June 2017 - Apply Now](#)**DHHS, ORION & NAADAC**
present**2017 Annual Nebraska Behavioral Health Conference****Nebraska Department of Health and Human Services****Other Resources**

- [SAMHSA's definition of Recovery](#)
- [SAMHSA's Concept of Trauma and Guidance for a Trauma Informed Approach](#)
- [Cultural and Linguistic Appropriate Standards](#)
- [In Eight Dimensions of Wellness- Self Care](#)
- ['Pathways to Recovery'](#)
- [Recovery Month - September](#)
- [SAMHSA Youth Engagement Guidance: Strategies, tools, and tips...](#)

Contact Us:[Cynthia Harris](#) - Administrator- 402-471-7766[Jennifer Ihle](#) - LRC Peer Bridger Program Coordinator - 402-479-5688[DHHS Division of Behavioral Health](#)**Office of Consumer Affairs**

301 Centennial Mall South - 3rd FL

P.O. Box 95026

Lincoln, NE 68509-5026

Fax: 402-471-7859

HCBS Waivers Available for People with Developmental Disabilities

A person with a developmental disability has several Medicaid Home and Community-Based Services (HCBS) Waiver options. Services offered under each waiver are explained on the back of this information sheet.

To be eligible for any waiver, an applicant must:

- 1) Be a citizen of the United States of America or a qualified alien under the federal Immigration and Nationality Act and be lawfully present in the United States;
- 2) Be a resident of the State of Nebraska; and
- 3) Have active Medicaid.

All applications can be completed and submitted online at www.ACCESSNebraska.ne.gov.

Aged and Disabled (AD) Waiver

Provides aged persons and persons of all ages with disabilities options for services and community supports, other than a nursing facility. A participant must have physical and health needs that require services like those provided by a nursing facility.

Traumatic Brain Injury (TBI) Waiver

Provides persons between ages 18 and 64 with acquired brain injuries assisted living services. A participant must have a diagnosis of traumatic brain injury with a nursing facility level of care. **MLTC administers this waiver that offers services at a specialized assisted living facility in Omaha.** Services include assistance with personal care activities and activities of daily living, such as an escort services to medical appointments, essential shopping, health maintenance activities, housekeeping, laundry, dining, provision of medications, personal care, and transportation.

Comprehensive Developmental Disabilities (CDD) Waiver

Allows persons of all ages with developmental disabilities to maximize their independence as they live, work, socialize, and participate to the fullest extent possible in their communities. A participant must have a developmental disability and needs that require services like those provided by an intermediate care facility for persons with developmental disabilities (ICF/DD).

Developmental Disabilities Adult Day (DDAD) Waiver

Allows persons ages 21 and over with developmental disabilities to maximize their independence as they live, work, socialize, and participate to the fullest extent possible in their communities. A participant must have a developmental disability and needs that require services like those provided by an intermediate care facility for persons with developmental disabilities (ICF/DD).

A developmental disability is defined in Nebraska Revised Statute 83-1205.

It is a severe, chronic disability, including intellectual disability, other than mental illness that:

- 1) Is due to a mental or physical impairment;*
 - 2) Began before age 22;*
 - 3) Is likely to continue;*
 - 4) Results in substantial limitations in three areas:*
 - a) Conceptual skills;*
 - b) Social skills; and*
 - c) Practical skills; and*
 - 5) Results in need for special services and supports.*
-

SERVICES HCBS WAIVER	OFFERED	Aged and Disabled (AD) Waiver	DD Comprehensive Services (CDD) Waiver	Developmental Disabilities Adult Day (DDAD) Waiver
Division Responsible for Oversight	MLTC	DDD	DDD	
Adult Companion Service provides drop-in assistance to help you live in your own home.	-	Yes	Yes	
Adult Day Services provide social activities, supervision, and support. No teaching (habilitation) included.	Yes	Yes	Yes	
Assisted Living Service is provided by licensed facilities for residential and support services.	Yes	-	-	
Assistive Technology provides equipment to increase daily skills and independence.	Yes	Yes	Yes	
Child Care for Children with Disabilities for youth through age 17 allows a usual caregiver to be employed or attend educational endeavors.	Yes	-	-	
Chore Service helps with personal care and household tasks so you can remain at home.	Yes	-	-	
Consultative Assessment Service for adults provides assessment and recommendations for challenging behaviors.	-	Yes	Yes	
Crisis Intervention Support for adults provides immediate and intensive strategies to staff that support you.	-	Yes	Yes	
Day Habilitation Services teach skills to be get and maintain a job. This includes Prevocational Services, Supported Employment, Habilitative Workshop, and Habilitative Community Inclusion.	-	Yes	Yes	
Environmental Modification Assessment determines home or vehicle changes to meet your needs.	Yes	Yes	Yes	
Home Again/Transitional Services pays non-recurring set-up expenses so you can move from an institution to a private home or assisted living.	Yes	Yes	Yes	
Home Delivered Meals provides meals to you at your home.	Yes	-	-	
Home Modifications to your private residence to help you stay safe and do things yourself.	Yes	Yes	Yes	
Homemaker does household activities and home care to help your usual caregiver when they are absent or unable to manage your family home.	-	Yes	Yes	
Independence Skills Management provides activities of daily living in your home or group setting.	Yes	-	-	
In-Home Residential Habilitation in your private home.	-	Yes	-	
Nutrition Services assesses your nutritional needs and helps you plan your diet.	Yes	-	-	
Personal Emergency Response System (PERS) provides a device to call for help.	Yes	Yes	Yes	
Residential Habilitation in a provider-owned home.	-	Yes	-	
Respite Service provides relief for your usual caregiver.	Yes	Yes	Yes	
Transportation provides rides to places in your community for non-medical purposes.	Yes	Yes	Yes	
Vehicle Modifications to your primary vehicle to help meet your needs and keep you safe.	Yes	Yes	Yes	

NEBRASKA DEPARTMENT OF HEALTH & HUMAN SERVICES

NEBRASKA
Good Life. Great Mission.

Helping People Live Better Lives

BEHAVIORAL HEALTH

CHILDREN & FAMILY SERVICES

DEVELOPMENTAL DISABILITIES

MEDICAID & LONG-TERM CARE

PUBLIC HEALTH

Search this site...



Childrens' Behavioral Health System

[Subscribe to this page](#)

Raising kids can be hard, but finding help doesn't have to be.

Click the links below to learn more about two Nebraska services for families with children experiencing behavioral health challenges.

Family Navigator/Family Peer Support Serviceshttp://youtu.be/-TALOS_hbpM**Nebraska Family Helpline**<http://youtu.be/NYDVcvc5RCQ>**Nebraska Family Helpline - 1-888-866-8660**

This new service is available 24/7/365, providing assistance to families with a youth experiencing behavioral health challenges. Some families may be referred on to receive further assistance from a Family Navigator. These new services were authorized in 2009 by the Children and Family Behavioral Health Support Act of LB603.

In 2009, The Children and Family Behavioral Health Support Act provided funding for three new services and the evaluation of such services. A contract was awarded to Hornby Zeller Associates, Inc for the Evaluation Services of those three new services.



1. The [Nebraska Family Helpline](#) and Family Navigator Services. [NE Helpline & Navigator Annual Report - Fiscal Year 2011](#)
2. Family Navigator and Post Adoption/Post Guardianship Services - [Right Turn](#).
3. The Evaluation includes a 'Dashboard' about the Helpline, Family Navigator and Right Turn services.
Click here for the [FY10 Annual Evaluation Report from Hornby Zeller Associates, Inc.](#) [FY11 Annual Evaluation Report from Hornby Zeller Associates, Inc.](#) [FY12 Annual Final Evaluation Report from Hornby Zeller Associates, Inc.](#)

Materials for Parents:

- [Fast Facts - Your Child's Mental Health: 12 Questions Every Parent Should Ask](#)
- [Family Guide to Systems of Care for Children with Mental Health Needs](#)

Nebraska has made great efforts in the past years to improve services to children and families. These successes include new plans at both the service and system levels. The Division of Behavioral Health funds outpatient treatment. It also continues to fund and expand middle intensity services including day treatment, respite care and school-based wraparound.

The Department also funds wraparound for children with serious emotional problems and their families through the [Professional Partner Program](#). The purpose of the Program is to improve the lives of Nebraska's children with serious emotional disturbances and their families. This would be done by preventing expensive out-of-home placements, reducing juvenile crime, increasing school performance and attendance, and preventing children from becoming state wards just to get services.

[LB 542 Implementation Report: Creating Change and Providing Hope for Nebraska's Children, Adolescents and Their Families 2008](#)

Program Annual Reports are available for [1999](#), [2000](#), [2001](#), [2004](#), [2005](#), [2006](#), [2007](#)

Family Networks

Another component of the service array system in the community is the family support organizations in each of the six behavioral health regions. Two offices offered a proposal to solicit bids for a new support activity called "Families Mentoring & Supporting Other Families," a joint initiative to request proposals from qualified sources to provide:

- Strength-based, family centered, and partnership oriented supports to:
 1. parents whose children are diagnosed with a serious emotional disturbance and substance dependence disorders.
 2. parents across the State of Nebraska whose children have been made state wards, or are in a voluntary case, or
 3. parent who are involved with the department as a result of a report of abuse/neglect, or
- The intent is to ensure that parents have a voice, ownership and access to the systems of care for their child (i.e. case plans, individual educational plans, treatment plans and any other care plan).

The Department sought organizations interested in working with the State to build support services to families that will focus on giving parents an understanding of wraparound services through peer role modeling and coaching. The philosophy of wraparound includes individualized services that are developed through professionals and parents in partnership where both are serving important roles in service delivery. Services are tailored to meet the individualized needs of the child and family and based upon strength-based assessments.

Early Childhood Mental Health

A Governor's Symposium on Early Childhood Mental Health was held in May 2001. At this two day meeting, family members, providers and policy makers laid out the challenge for a comprehensive, integrated and coordinated system of care to meet the mental health needs of our youngest children. The *Early Child Mental Health Work Group* has been developing an action plan to develop a system that is child focused and family centered, culturally responsive, community based and committed to continuous improvement.

For more information contact:

Susan Adams
Network Operations Team Manager
Division of Behavioral Health
PO Box 95026
Lincoln NE 68509-5026
Phone: (402) 471-7820

Page last edited: 09/21/2011

Resources for youth with psychiatric disabilities and frequently developmental disabilities, are available in NE, but not easy to access for a variety of reasons, including:

- ✓ Where the child lives within the state. Most of services only exist in a few of the 93 counties in our state. Lancaster, Sarpy, Douglas Washington and Hall. The further one resides from these urban counties, the more difficult it is to find support services for severely disabled, Autistic, Developmentally Delayed, mentally ill youth.
- ✓ It is not uncommon for youth with severe and/or co-occurring medical and psychiatric conditions.
- ✓ Not all therapists are willing or skilled enough to treat some at-risk, high needs youth commonly seen in wards of state.
- ✓ Many therapists and psychiatrists have "quotas" established limiting the number of Medicaid/Medicare insured clients they are willing to treat.
- ✓ Treatment in the Panhandle region of NE may have to be obtained in Rapid City, Cheyenne, or Denver as psych and specialized care is minutely available in NE.
- ✓ Transportation costs (including taking time off work, hotel stays and meals) for impoverished families poses a problem for consistent access.

WHAT TO DO?

Subscribe to a variety of on line resources for credible articles regarding Autism and other Developmental Disabilities, plus Mental Illnesses. Ie:

- http://dhhs.ne.gov/Pages/reg_t471.aspx
- <https://findtreatment.samhsa.gov/>
- http://dhhs.ne.gov/behavioral_health/Pages/beh_mh_mhadvo.aspx
- <https://naminebraska.org/>
- <http://www.friendshipcircle.org/blog/2013/07/15/15-indispensible-websites-for-parents-of-children-with-autism/>
- <https://www.disabilitycoop.com/autism/>
- <https://mha-ne.org/>
- <http://www.fhasinc.org/fair-housing-center.html>
- <http://www.disabilityrightsnebraska.org/>

Get to know and work closely with the youth's case worker, use the DHHS resources as they have a handle on the services you may be considering recommending to the court in your assigned youth's best interest.

KNOWLEDGE IS POWER to solve many of the issues Wards of State face!



Network of Care **For Behavioral Health**

www.networkofcare.org



1 / SERVICE DIRECTORY
Provide a comprehensive database that enables consumers to quickly locate local programs and services and make informed choices about what they need.

2 / CRISIS SERVICES
Offer quick reference to all local emergency and crisis intervention programs in your area.

3 / LIBRARY
Assembles more than 30,000 high-quality articles, fact sheets and interactive tools in English – and more than 10,000 in Spanish.

4 / eLEARNING
Free online training for consumers and a comprehensive online solution for professional CEUs.

The Network of Care was specifically recommended to all states and counties by the President's New Freedom Commission on Mental Health. This unique and successful program has served tens of millions of consumers during the past decade. It can be easily replicated and customized for any county and state in the nation.

//
**For such low cost,
 it's an incredible
 resource that you
 can provide to your
 community. It's the
 one place where
 you find everything.**
 //



30 MILLION SERVED

ONLINE
STUDENTS
SERVED



– Mark Refowitz, Behavioral Health
 Director, Orange County (Calif.)
 Health Care Agency

During the past decade, the Network of Care has served more than 30 million persons across the nation and trained hundreds of thousands – in person and online – via our eLearning system. The Call Center application has served hundreds of thousands of consumers.

More NOC key features:

- The Learning Center is designed to educate, inform, and provide access to the most relevant information available for a particular subject area.
- Each portal is fully customized to serve the local area, and a user-friendly client interface enables Network of Care partners to easily display local content throughout the site.
- An advanced Social Networking platform is designed to promote collaboration and coordination across diverse groups in each community.
- Both HIPAA- and HITECH-compliant, the Personal Health Record stores valuable medical and legal information and documents. It integrates seamlessly with the Network of Care.
- A Call Center application that records and tracks information about a client's specific and unmet needs. Customize fields for data collection; make direct referrals to providers, and produce the reports you need.

Get In Touch:

For more information or to schedule a Webcast demo for you and your leadership team, please contact:

Bruce Bronzan
 President, Trilogi Integrated Resources
Bronzan@trilogiyr.com or (415) 458-5900